

# **Violence against the Police (and other representatives of the State)**

**Calum Steele**

**General Secretary – Scottish Police Federation**

**General Secretary – ICPRA**

**2<sup>nd</sup> Vice President – EuroCOP**

**Gimborn, Germany  
November 2017**



# Violence against police officers is an occupational hazard?





# Causes

**Alcohol**

**Ideology – protest**

**Ideology – terrorism**

**Despair**

**Mental illness**

**Many more...**



**Violence against the police  
is increasing!**



## Northern Ireland (Sectarianism)





## London (Tuition Fees)





Belgrade (Far Right)





## Mexico (Anti “WALL”)





## Bangkok 2014 (Anti Government)





## Paris (anti Far Right)

















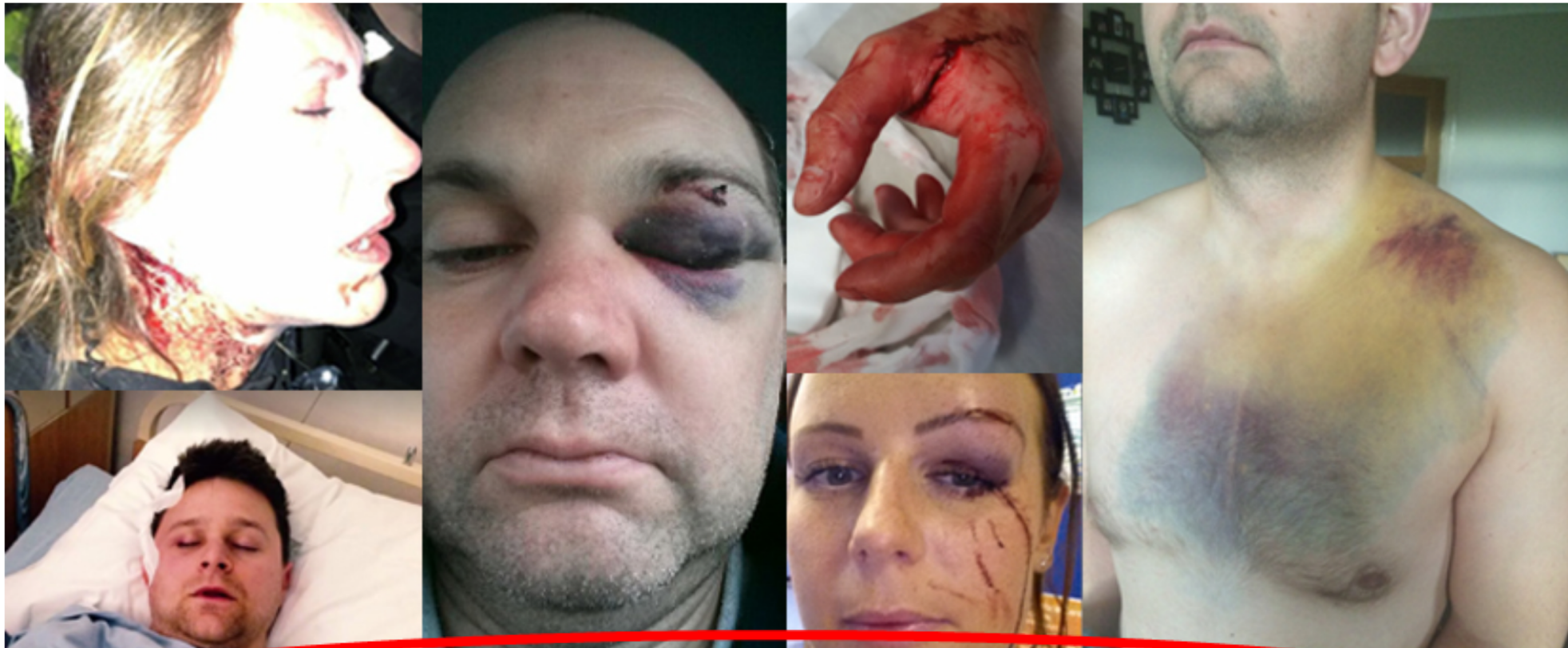
**Anyone who assaults a  
police officer should be  
imprisoned?**







# Assaults: Protect the Protectors



Assaults on police officers are sadly commonplace. Our latest [welfare survey data](#) suggests there were more than two million unarmed physical assaults on officers over 12 months, and a further 302,842 assaults using a deadly weapon during the same period. These figures estimate that **an assault on a police officer happens every four minutes.**

To assault a police officer, prison officer, or other emergency service worker is to attack society itself and should never be accepted as 'part of the job'. Together with our partners, the [British Transport Police Federation](#) and [Prison Officers' Association](#), we are campaigning

To assault a police officer, prison officer, or other emergency service worker is to attack society itself and should never be accepted as 'part of the job'. Together with our partners, the [British Transport Police Federation](#) and [Prison Officers' Association](#), we are campaigning for:

- a change in legislation
- tougher sentences
- better training and access to equipment
- more accurate data on police assaults
- improved welfare support.

### **What is the Police Federation doing?**

We are working with MPs to press for a change in legislation, leading to tougher sentences for those who assault police officers and other emergency service workers. A review of sentencing for those convicted of assaulting police officers is also being called for - all too often sentences being passed do not adequately reflect the seriousness of the offence.







# 2016 LAW ENFORCEMENT OFFICERS KILLED & ASSAULTED

Criminal Justice Information Services Division

[Feedback](#) | 
 [Contact Us](#) | 
 [Data Quality Guidelines](#) | 
 [UCR Home](#)

[Home](#)

[Officers Feloniously Killed](#)

[Officers Accidentally Killed](#)

[Officers Assaulted](#)

[Federal Officers Killed and Assaulted](#)

[About LEOKA](#)

## Officers Assaulted

► [Download Printable Document](#)

The following information concerns duly sworn city, university and college, county, state, and tribal law enforcement officers who were assaulted in the line of duty in 2016 and who met certain other criteria.

### Overview

In 2016, the FBI collected assault data from 12,421 law enforcement agencies that employed 586,446 officers. These officers provided service to more than 268.2 million persons, or 83.0 percent of the nation's population. (See Table 70.)

- Law enforcement agencies reported that 57,180 officers were assaulted while performing their duties in 2016. (See Table 70.)
- The rate of officer assaults in 2016 was 9.8 per 100 sworn officers. (See Table 70.)

### Resources

- [Methodology](#)
- [Criteria](#)
- [Detailed Assault Data](#)

### Figures and Maps

- [Figure 1](#)
- [Figure 4](#)
- [Map](#)

### Data Tables

Roll over table numbers for table titles.

#### Law Enforcement Officers Assaulted

- [Table 70](#)
- [Table 71](#)
- [Table 72](#)
- [Table 73](#)
- [Table 74](#)
- [Table 75](#)





## Police Officers Killed in the Line of Duty

■ Number of officers feloniously killed in a year  
■ Preceding 10-year average







© AFP/Getty Images







**“Police officers kill  
more Americans  
than terrorism, yet  
we’ve been asked  
to sacrifice our  
most sacred rights  
for fear of falling  
victim to it.”**

**-Edward Snowden -**











# Effects

**More than just the officer**

**Permanent Injury**

**Psychological**

**Resentment**

**End of Career**





# Police Responses

Support?

Welfare?

Learning?

Training

Equipment?

Blame?



# Political Responses

Anger & Outrage

Blame

Photo Opportunities

Tough Talking

New Laws

Tougher Sentences



# Police Unions

**Reactive or Proactive**

**Member expectations**

**Evidence**

**Wider factors**

**Evidence**



**Violence against police  
officers is an occupational  
hazard**



# Questions?

